



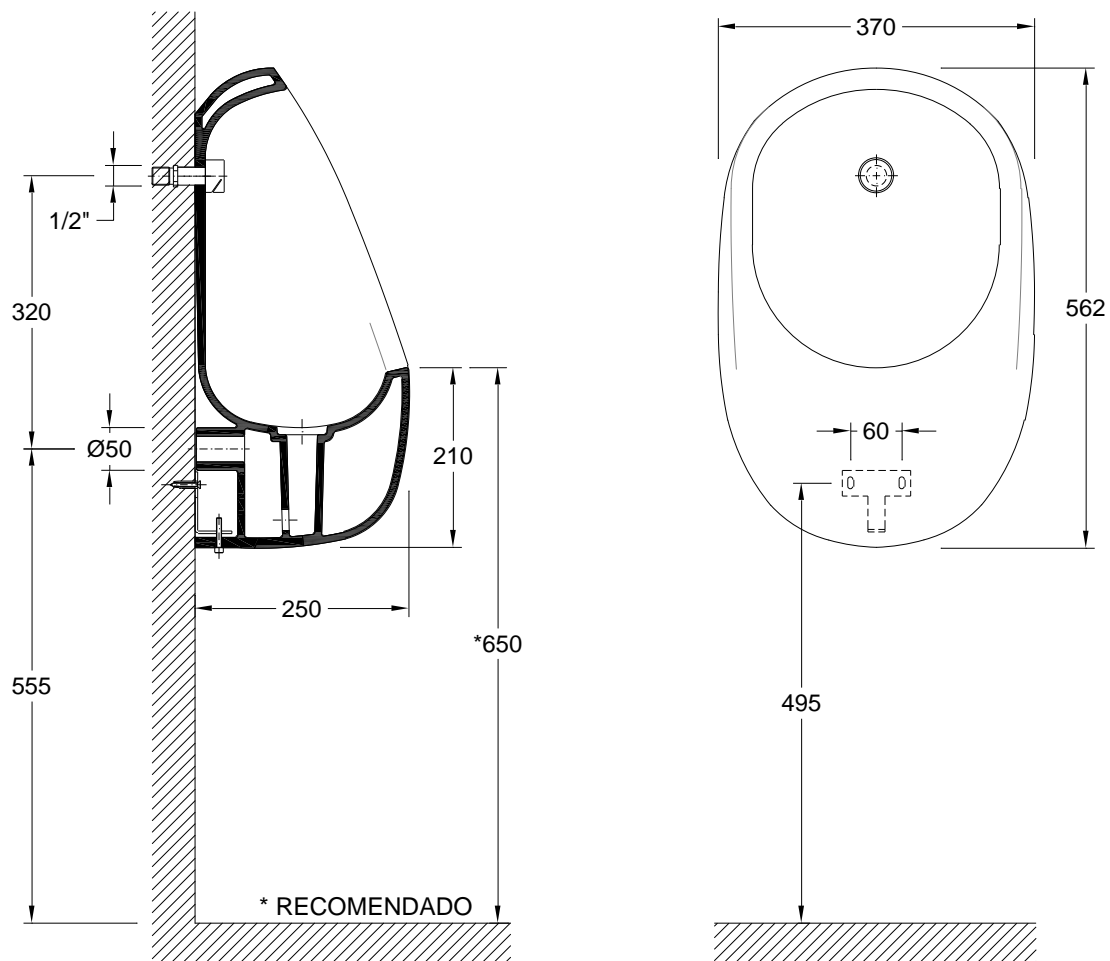
A R C H

# INSTRUÇÕES DE MONTAGEM

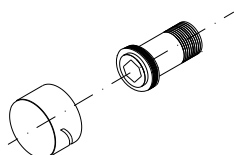
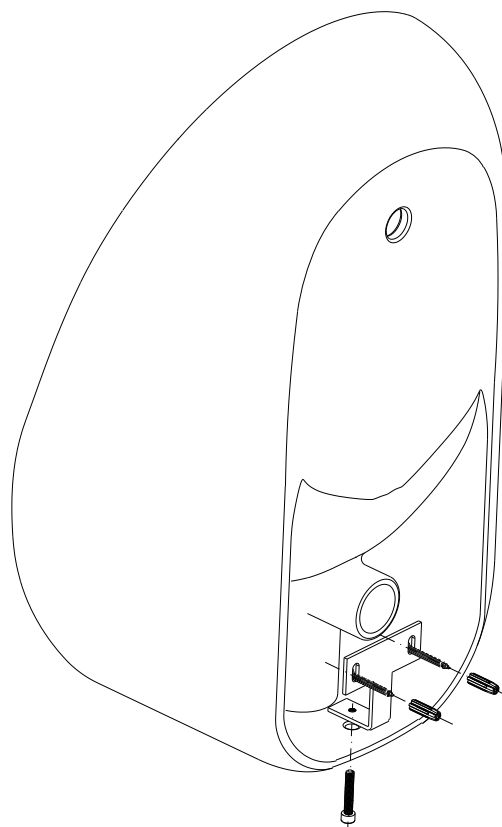
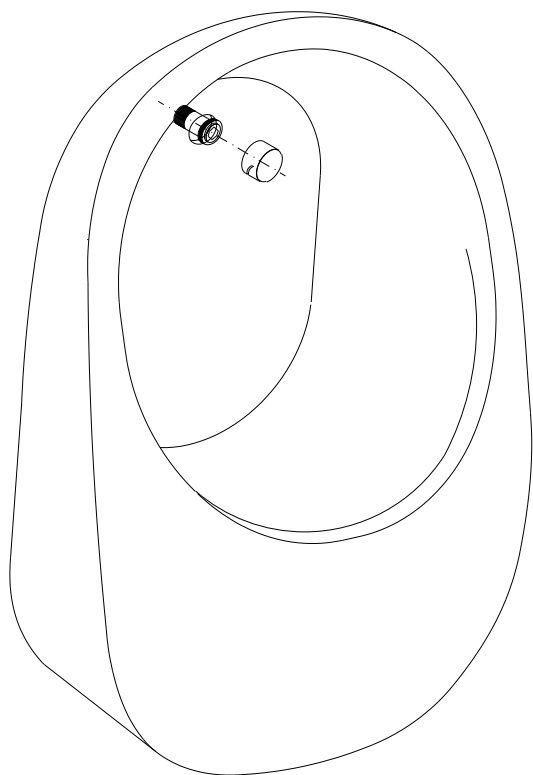
## ASSEMBLY INSTRUCTIONS

### URINOL KINO

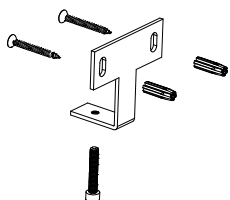
*KINO Urinal*



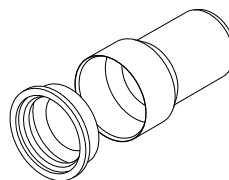
<b>Condições de Instalação</b>	<b>Assembly Conditions</b>
O tubo de entrada de água deve estar faceado com a parede	The inlet water pipe must be aligned with the wall
A altura do esgoto ao chão é uma recomendação da Valadares	The height of the outlet to the floor is a Valadares's recommendation
Este urinol deve ser instalado com fluxómetro de embutir	This urinal should be installed with wallbox flowmeter



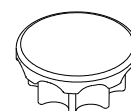
1 ESPALHADOR  
1 SPREADER



1 KIT DE FIXAÇÃO  
1 FIXING KIT



1 EMBOQUE  
1 DISCHARGE TUBE



1 TACO CERÂMICO  
1 CERAMIC COVER

Instrução de Montagem	Assembly Instruction
Marcar os furos na parede de acordo com a altura recomendada na figura 1	Mark, according to the recommended height in the figure 1, the place where to fix the screws.
Aplicar o tubo de esgoto	Apply the discharge tube
Instalar o Urinol na parede	Assembly the urinal in the wall
Roscar o espalhador no tubo de entrada de água (se necessário cortar)	Threading the spreader in the inlet water pipe (cut it if necessary)
Garantir que o espalhador fica na posição correcta (Ver a figura)	Ensure that the spreader is in the right position (see the figure)